



The Leeds-Morecambe Community Rail Partnership ('The Bentham Line') brings together local people and representatives from local councils, rail operators and Network Rail; with the aim creating an inclusive, sustainable rail network fulfilling the four pillars of the Community Rail Development Strategy:

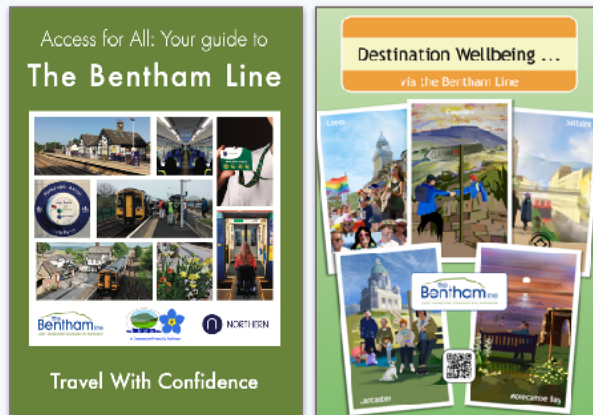
- providing a voice for the community.
- promoting sustainable, healthy & accessible travel.
- bringing communities together & supporting diversity & inclusion.
- supporting social & economic development.

DEMENTIA AND COMMUNITY RAIL

The project was developed during 2016 and launched in February 2017 with four main themes:

- raising awareness & understanding of dementia with staff & volunteers.
- developing dementia friendly stations.
- creating & encouraging dementia friendly excursions.
- supporting passengers travelling with dementia & their carers

ACCESSIBILITY ON THE BENTHAM LINE



We believe that everyone should be able to enjoy travelling by rail and do so with confidence.

The Bentham Line has a range of accessibility materials, including our Access for All guide, with accompanying videos, as well as our Destination Wellbeing booklet.



Leeds-Morecambe
Community Rail Partnership
Bentham Station Building
Station Road
Bentham, Lancaster, LA2 7LF

Telephone: 015242 98940

Email: the.bentham.line@gmail.com

THE BENTHAM LINE

DEMENTIA AND COMMUNITY RAIL



POSSIBLE ITINERARIES



Afternoon tea at the Midland Hotel, Morecambe



Home cooked food at 'Brief Encounter' Bistro, Carnforth



A picnic before exploring the Birch Hills Trail at Stocks Reservoir

MORECAMBE

Following a relaxing train journey to Morecambe, the group then choose their activities. From afternoon tea at a local hotel to fish and chips on the seafront - there's so much to choose from. After eating, a gentle stroll on the promenade to strike a pose at the Eric Morecambe statue is sure to bring the fun and, hopefully, the sunshine too.

CARNFORTH

After enjoying a train journey to Carnforth and tucking into a delicious light lunch, take a step back in time and explore the Carnforth Heritage Centre exhibitions about railways, local history and the famous romantic film 'Brief Encounter'.

FOREST OF BOWLAND NATIONAL LANDSCAPE

On arriving at Bentham by train, it's "all change!" onto a local minibus to explore the countryside. Then it's time to experience the great outdoors. Firstly, why not enjoy a picnic adjacent to Stocks Reservoir, then saunter round the 1.5 mile, accessible Birch Hills Trail at Gisburn Forest in the Forest of Bowland.

SALTAIRE - UNESCO WORLD HERITAGE SITE

After a train journey to Saltaire, have a light lunch in the village or a picnic in Roberts Park before visiting the famous Salts Mill and quaint Victoria Hall, or take a stroll along the Leeds-Liverpool canal.



A photograph with Eric by the seaside at Morecambe



Viewing a 'Brief Encounter' at Carnforth Heritage Centre



Visiting the famous Salts Mill and Victoria Hall, Saltaire